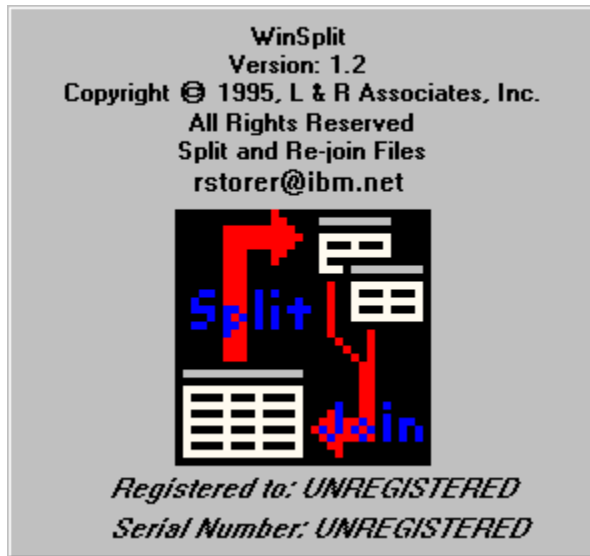


# Contents



[More About WinSplit](#)

[Version History](#)



In no event shall any person or organization be held responsible for damages of any kind from use of this program. Your use constitutes consent to the above.

This program is ShareWare. If you decide to adopt it into your tool library, please send me two US dollars (\$2) for my troubles. Or, if you prefer, send five US dollars (\$5) if you reside in the continental United States, otherwise send ten US dollars (\$10), and I will send you a floppy disk with the program on it. The address is:

Ray Storer  
L&R Associates, Inc  
613 Brown Street  
Vine Grove, KY 40175-1122  
Internet E-mail: rstorer@ibm.net  
CIS: 102702,3466

Now, that we have dispensed with the preliminaries, let's get on with the show! <Smile>

I think you will find the program pretty self explanatory with all the little hints flying around on just about every button or edit box. However, I will mention a couple of trouble areas:

- Maximum number of files that a source file can be split into is 1000 (000 to 999). If you go beyond this number a program error **will** occur. (Seriously folks, I had to put the limit somewhere.)
- Maximum file length is around 2 billion bytes (Long Integer for you programmers). A system error **will** occur if the file created/read is too large.

I appreciate all comments concerning this program. In fact, if you make a suggestion that I deem worthy of reward, I will send you a registered copy of WinSplit via E-mail or CIS.

Enjoy! Ray

# Version History

<b>Version</b>	<b>Comments</b>
1.0b	Beta release with basic functionality
1.0	Released for local community use
1.1	Released to the world
1.2	Added an INI file to remember where you last did a split and/or join. Also added the ability to delete, copy, and move files from the files created list on the Split tab.



